

EXPERTS EN
SURFACES
SYNTHÉTIQUES



SYNTHETIC
SURFACES
EXPERTS

1-855-240-8873

syntheticexperts.com



TRYLAWN **TURF**
Synthetic turf

installation instructions

If you wish to install your synthetic turf yourself, please follow the guidelines in this document to ensure a trouble-free installation and extend the life of your product.



Detailed English installation with images and video on our website

syntheticexperts.com/synthetic-turf-installation/

Accessories



Geotextile



Ribbon



Glue



1

Prep the surface: remove old grass, excavate 6 inches deep, level the terrain.



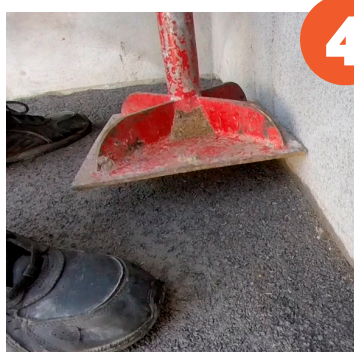
2

Geotextile installation: measure, cut, fix.



3

Fill with 4 to 5" of 0-3/4 rocks. Level and compact.



4

Add 1" rock dirt. Level and compact.



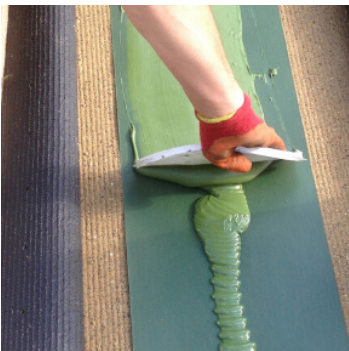
5

Artificial turf laying,
cut with exacto knife.



7

Nail down turf perimeter with non
galvanized 6" nails, 6" apart.



6

Glue joints with Trylawnturf's special glue and ribbon.

Install the tape under the 2 parts to be joined and nail it to
the ground.

Align the 2 pieces to be joined, and keep the same direction of
the grass strand.

Install glue on the tape and spread with a notched trowel.

Fold the 2 pieces over the tape and glue, and let dry.



8

Brush the entire surface of the lawn
with a mechanical broom.



**SYNTHETIC
SURFACES
EXPERTS**

warehouse open to the public

2930 Boul. le Corbusier, Laval, QC H7L 3M2

info@syntheticexperts.com

1-855-240-8873

syntheticexperts.com

This installation manual is provided for informational purposes only to provide the customer with a basic understanding of the installation process for Trylawnturf synthetic turf. The procedures in this document are in accordance with proper installations of artificial lawn. Syn-X makes no warranty as to, and cannot be held responsible for, the content or use of this installation manual. Syn-X cannot be held responsible for any synthetic grass installed in a DIY way: the entire responsibility rests with the owner. Syn-X representatives will, however, remain available to answer any questions that may arise during the installation.